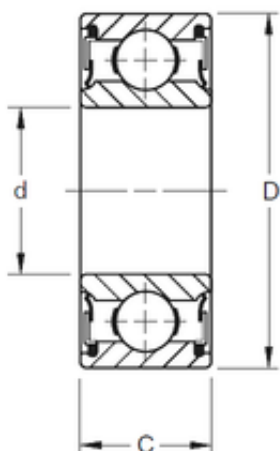




ISOSTATIC BEARING LIMITED



10 mm x 30 mm x 9 mm TIMKEN 200PP Single Row Ball Bearings

Bearing No. 200PP

Size	10x30x9 mm
Bore Diameter	10 mm
Outer Diameter	30 mm
Width	9 mm
d	10 mm
D	30 mm
B	9 mm
C	9 mm
Weight	0,027 Kg
Basic dynamic load rating (C)	6,8 kN

200PP Bearing 2D drawings and 3D CAD models