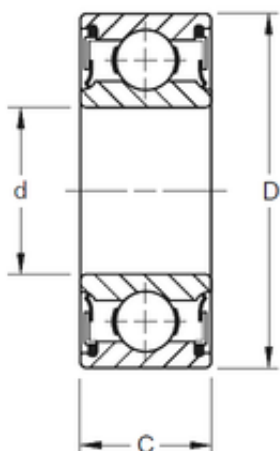




## ISOSTATIC BEARING LIMITED



### 50 mm x 80 mm x 16 mm TIMKEN 9110PP Single Row Ball Bearings

Bearing No. 9110PP

Size	50x80x16 mm
Bore Diameter	50 mm
Outer Diameter	80 mm
Width	16 mm
d	50 mm
D	80 mm
B	16 mm
C	16 mm
Weight	0,272 Kg
Basic dynamic load rating (C)	24,9 kN

9110PP Bearing 2D drawings and 3D CAD models