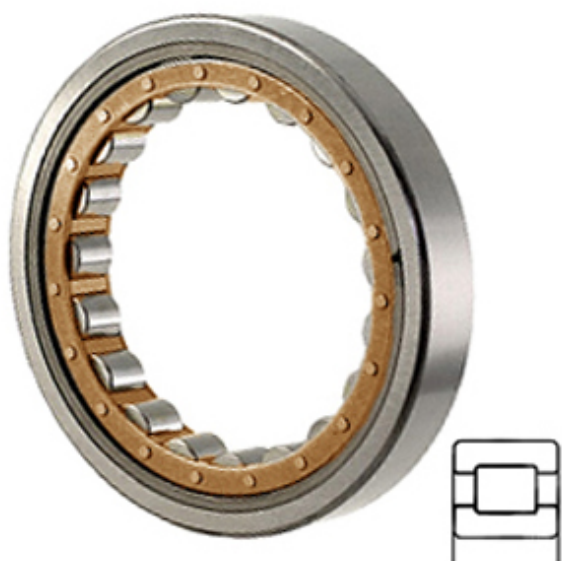




ISOSTATIC BEARING LIMITED



RNU 2319 ECML Bearing 2D drawings and 3D CAD models

4.783 Inch | 121.5 Millimeter x 200 mm x 2.638
Inch | 67 Millimeter SKF RNU 2319 ECML
Cylindrical Roller Bearings

Bearing No. RNU 2319 ECML

Category	Cylindrical Roller Bearings
Inventory	0.0
Manufacturer Name	SKF
Minimum Buy Quantity	N/A
Weight	8.206
EAN	7316572496497
Product Group	B04144
Bore Profile	Straight
Cage Material	Brass
Precision Class	RBEC 1 ISO P0
Number of Rows of Rollers	Single Row
Separable	No
Rolling Element	Cylindrical Roller Bearing
Profile	Roller Assembly with Outer Ring - No Inner Ring
Snap Ring	No
Internal Clearance	C0-Medium
Retainer	Yes
Relubricatable	Yes
Inch - Metric	Inch
Other Features	High Capacity 2 Rib Outer Ring Cage on Outer Ring ID
Long Description	4.783" Bore; Straight Bore Profile; 7.874" Outside Diameter; 2.638" Width;



ISOSTATIC BEARING LIMITED

	Brass Cage Material; RBEC 1 ISO P0; Single Row; Not Separable; No Snap Ring; Relubricatable; C0-Medium Inter
Category	Cylindrical Roller Bearing
UNSPSC	31171547
Harmonized Tariff Code	8482.50.00.00
Noun	Bearing
Keyword String	Cylindrical
Manufacturer URL	http://www.skf.com
Manufacturer Item Number	RNU 2319 ECML
Weight / LBS	18.091
D	7.874 Inch 200 Millimeter
d	4.783 Inch 121.5 Millimeter
B	2.638 Inch 67 Millimeter
F _w	121.5 mm
D	200 mm
C	67 mm
D ₁	169.1 mm
r _{1,2} min.	3 mm
d _a max.	132 mm
D _a max.	185 mm
r _a max.	2.5 mm
Basic dynamic load rating C	530 kN
Basic static load rating C ₀	585 kN
Fatigue load limit P _u	69.5 kN
Reference speed	3600 r/min
Limiting speed	6300 r/min
Calculation factor k _r	0.25
Limiting value e	0.3
Axial load factor Y	0.4
Mass bearing	8.09 kg



ISOSTATIC BEARING LIMITED