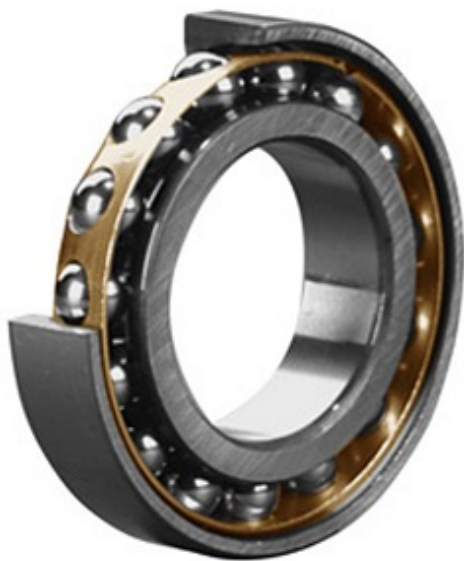




# ISOSTATIC BEARING LIMITED



## 50 mm x 130 mm x 31 mm SKF 7410 BCBM Angular Contact Ball Bearings

Bearing No. 7410 BCBM

7410 BCBM Bearing 2D drawings and 3D CAD models

Category	Angular Contact Ball Bearings
Inventory	0.0
Manufacturer Name	SKF
Minimum Buy Quantity	N/A
Weight	2.13
EAN	7316576651328
Product Group	B00308
Enclosure	Open
Flush Ground	Yes
Rolling Element	Ball Bearing
Number of Rows of Balls	Single Row
Precision Class	ABEC 3   ISO P6
Maximum Capacity / Filling Slot	No
Snap Ring	No
Cage Material	Brass
Contact Angle	40 Degree
Internal Clearance	CB
Number of Bearings	1 (Single)
Mounting Arrangement	Universal
Inch - Metric	Metric
Long Description	50MM Bore; 130MM Outside Diameter; 31MM Width; Open; Yes Flush Ground; Ball Bearing; Single Row of Balls; ABEC 3   ISO P6; No Filling Slot; No Snap



## ISOSTATIC BEARING LIMITED

	Ring
Other Features	Normal Axial Internal Clearance
Category	Angular Contact Ball Bearing
UNSPSC	31171531
Harmonized Tariff Code	8482.10.50.28
Noun	Bearing
Keyword String	Angular Contact
Manufacturer URL	<a href="http://www.skf.com">http://www.skf.com</a>
Manufacturer Item Number	7410 BCBM
Weight / LBS	4.68
B	1.22 Inch   31 Millimeter
d	1.969 Inch   50 Millimeter
D	5.118 Inch   130 Millimeter
bore diameter:	50 mm
radial static load capacity:	64 kN
outside diameter:	130 mm
cage material:	Brass
overall width:	31 mm
outer ring width:	31 mm
contact angle:	40 °
maximum rpm:	6700 RPM
row type & fill slot:	Single-Row Non-Fill Slot
finish/coating:	Uncoated
internal clearance:	C0
precision rating:	ABEC 3 (ISO Class 6)
closure type:	Open
fillet radius:	2 mm
radial dynamic load capacity:	95.6 kN
series:	74
d	50 mm



## ISOSTATIC BEARING LIMITED

D	130 mm
B	31 mm
d <sub>1</sub>	81.4 mm
d <sub>2</sub>	66.8 mm
D <sub>1</sub>	99.85 mm
a	53 mm
r <sub>1,2</sub> min.	2.1 mm
r <sub>3,4</sub> min.	2.1 mm
d <sub>a</sub> min.	55 mm
D <sub>a</sub> max.	110 mm
D <sub>b</sub> max.	116.5 mm
r <sub>a</sub> max.	2 mm
r <sub>b</sub> max.	2 mm
Basic dynamic load rating C	95.6 kN
Basic static load rating C <sub>0</sub>	64 kN
Fatigue load limit P <sub>u</sub>	2.7 kN
Reference speed	7000 r/min
Limiting speed	6700 r/min
Calculation factor A	0.0785
Calculation factor k <sub>r</sub>	0.1
Calculation factor e	1.14
Calculation factor X	0.35
Calculation factor Y <sub>0</sub>	0.26
Calculation factor Y <sub>2</sub>	0.57
Calculation factor X	0.57
Calculation factor Y <sub>0</sub>	0.52
Calculation factor Y <sub>1</sub>	0.55
Calculation factor Y <sub>2</sub>	0.93
Mass bearing	2.25 kg