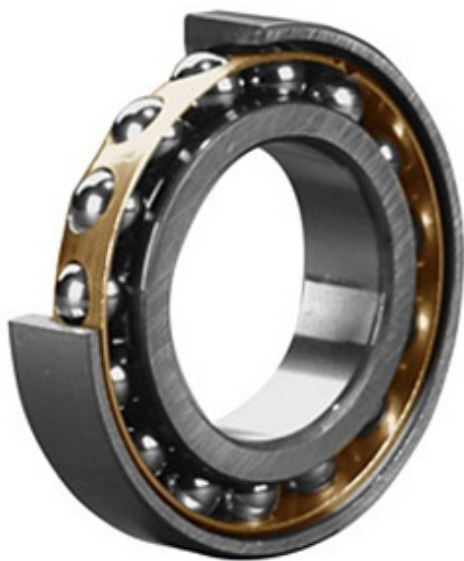




# ISOSTATIC BEARING LIMITED



1.181 Inch | 30 Millimeter x 2.441 Inch | 62  
Millimeter x 0.63 Inch | 16 Millimeter SKF 7206  
BECBY/W64 Angular Contact Ball Bearings

Bearing No. 7206 BECBY/W64

7206 BECBY/W64 Bearing 2D drawings and 3D CAD  
models

Category	Angular Contact Ball Bearings
Inventory	0.0
Manufacturer Name	SKF
Minimum Buy Quantity	N/A
Weight	0
EAN	7316571684925
Product Group	B00308
Enclosure	Open
Flush Ground	Yes
Rolling Element	Ball Bearing
Number of Rows of Balls	Single Row
Precision Class	ABEC 1   ISO P0
Maximum Capacity / Filling Slot	No
Snap Ring	No
Cage Material	Brass
Contact Angle	40 Degree
Internal Clearance	CB
Number of Bearings	1 (Single)
Mounting Arrangement	Universal
Inch - Metric	Metric
Long Description	30MM Bore; 62MM Outside Diameter; 16MM Width; Open; Yes Flush Ground; Ball Bearing; Single



## ISOSTATIC BEARING LIMITED

	Row of Balls; ABEC 1   ISO P0; No Filling Slot; No Snap Ring; CB; Brass Cage; 40 Degree; 1 (Single); Universa
Other Features	Normal Axial Internal Clearance
Category	Angular Contact Ball Bearing
UNSPSC	31171531
Harmonized Tariff Code	8482.10.50.28
Noun	Bearing
Keyword String	Angular Contact
Manufacturer URL	<a href="http://www.skf.com">http://www.skf.com</a>
Manufacturer Item Number	7206 BECBY/W64
B	0.63 Inch   16 Millimeter
d	1.181 Inch   30 Millimeter
D	2.441 Inch   62 Millimeter
bore diameter:	30 mm
snap ring included:	Without Snap Ring
outside diameter:	62 mm
bearing material:	Chrome Steel
overall width:	16 mm
radial dynamic load capacity:	5395 lbf
contact angle:	40 °
radial static load capacity:	3507 lbf
row type & fill slot:	Single-Row Non-Fill Slot
operating temperature range:	0 ° F to 185 ° F
internal clearance:	C0
cage material:	Steel
bore type:	Round
finish/coating:	Uncoated
closure type:	Open



## ISOSTATIC BEARING LIMITED

application:

Metal manufacturing, Paper mills, Steel mills – plate, slab, strip, blast furnace, Overhead cranes, Food and beverage, Rock and stone conveyors, Shipyards Metal manufacturing Pap